



SCHOOL REPORT CARD 2008

Arizona Department of Education

Tom Horne Superintendent of Public Instruction
Research and Evaluation Section
(602) 542-5151 / reportcards@azed.gov

Principal Travis Kolter
TKolter@cfsd16.org

Entity ID 5834
CTDS 100216103
Grades Served 6 - 8
Students Enrolled 646
Type of School Regular Facility - In A Unified School District

Office Hours 7:00 AM to 3:30 PM
Number of Instruction days Not Avail
School Year Start and End Not Avail

Orange Grove Middle School

Catalina Foothills Unified District

1911 E Orange Grove Rd
Tucson, AZ 85718
(520) 209-8200 office

<http://www.cfsd16.org/schools/orangegrove/>

School Mission and Goals

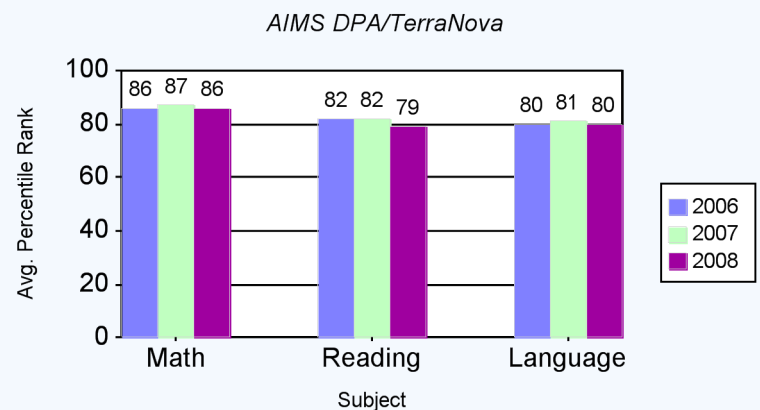
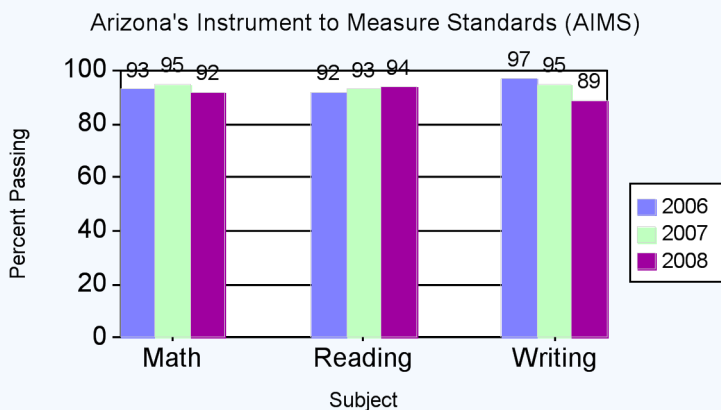
The mission of Orange Grove, a middle school community dedicated to the development of the whole child, is to ensure that all students excel in academic achievement and social responsibility through flexible, innovative programs with superb instruction in a safe and stimulating environment.

AZ LEARNS Profile For The School Excelling

The Federal School Improvement Status N/A

The AYP Status For This School Met

Test Results for Spring 2007



Measure of Academic Progress (MAP)

Subject	Number in Analysis	Avg Growth Index For School	Avg Growth Index for State
MATH	599	2	-3
READ	601	3	-1

On Campus Incidents 7

Our school is ensuring a safe and healthy learning environment for all students. Administration and counselors have met with students in a group setting to discuss expectations for student conduct in relation to the school's policies and guidelines. The school has also implemented a Positive Behavior Intervention Program to recognize and encourage students' positive behaviors. This program includes a common language and theme that is posted throughout the school and mentioned by all staff

Arizona English Language Learners Assessment (AZELLA)

Number of English Language Learners Not Avail
Percent Reclassified as Proficient Not Avail

School Performance Measures

Attendance Rate 96%
Promotion Rate 100%
Dropout Rate 0%
Four-Year Graduation Rate* NA
Five-Year Graduation Rate* NA

* - Graduation Rate does not apply to K-8 Schools
NA - Not Applicable

The Arizona Department of Education of the State of Arizona does not discriminate on the basis of race, religion, color, national origin, sex, disability or age in its programs, activities or in its hiring and employment practices. For questions or concerns regarding this statement, please contact Administrative Services at 602-542-3186.