



# SCHOOL REPORT CARD 2008

## Arizona Department of Education

Tom Horne Superintendent of Public Instruction  
Research and Evaluation Section  
(602) 542-5151 / reportcards@azed.gov

Principal Not Avail

Entity ID 5766

CTDS 100201675

Grades Served 9 - 12

Students Enrolled 723

Type of School Regular Facility - In A Unified School District

Office Hours Not Avail

Number of Instruction days Not Avail

School Year Start and End Not Avail

### University High School

Tucson Unified District

Not Avail

, AZ

Not Avail

### School Mission and Goals

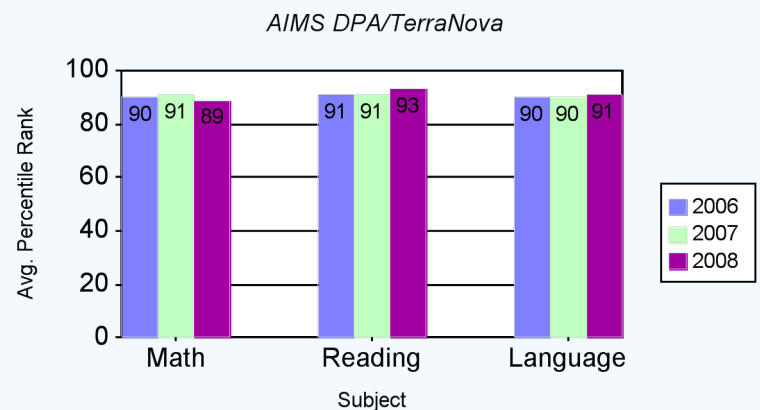
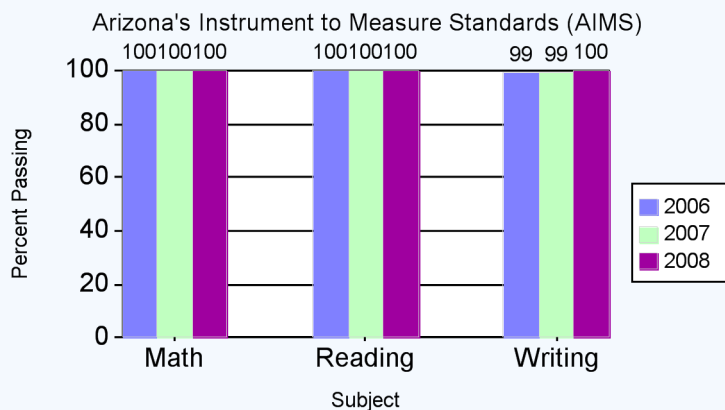
Not Avail

AZ LEARNS Profile For The School Excelling

The Federal School Improvement Status N/A

The AYP Status For This School Met

### Test Results for Spring 2007



### Measure of Academic Progress (MAP)

Not Avail

### Arizona English Language Learners Assessment (AZELLA)

Number of English Language Learners Not Avail

Percent Reclassified as Proficient Not Avail

### School Performance Measures

Attendance Rate 97%

Promotion Rate 100%

Dropout Rate 0%

Four-Year Graduation Rate\* 100%

Five-Year Graduation Rate\* 100%

\* - Graduation Rate does not apply to K-8 Schools  
NA - Not Applicable

The Arizona Department of Education of the State of Arizona does not discriminate on the basis of race, religion, color, national origin, sex, disability or age in its programs, activities or in its hiring and employment practices. For questions or concerns regarding this statement, please contact Administrative Services at 602-542-3186.